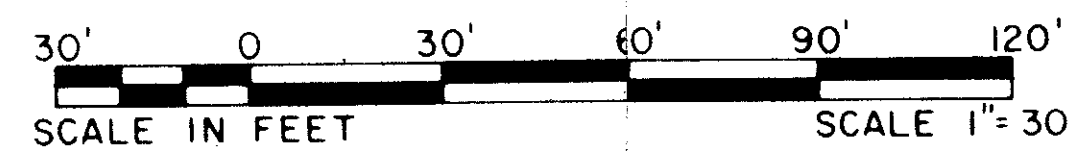


# POLO ISLAND OF PALM BEACH POLO AND COUNTRY CLUB WELLINGTON P.U.D.

## A REPLAT OF LOTS 7, 8, 9, 10, 11, 12 AND PART OF 13 EQUESTRIAN / POLO VILLAGE AND COMPLEX OF PALM BEACH POLO AND COUNTRY CLUB WELLINGTON P.U.D.

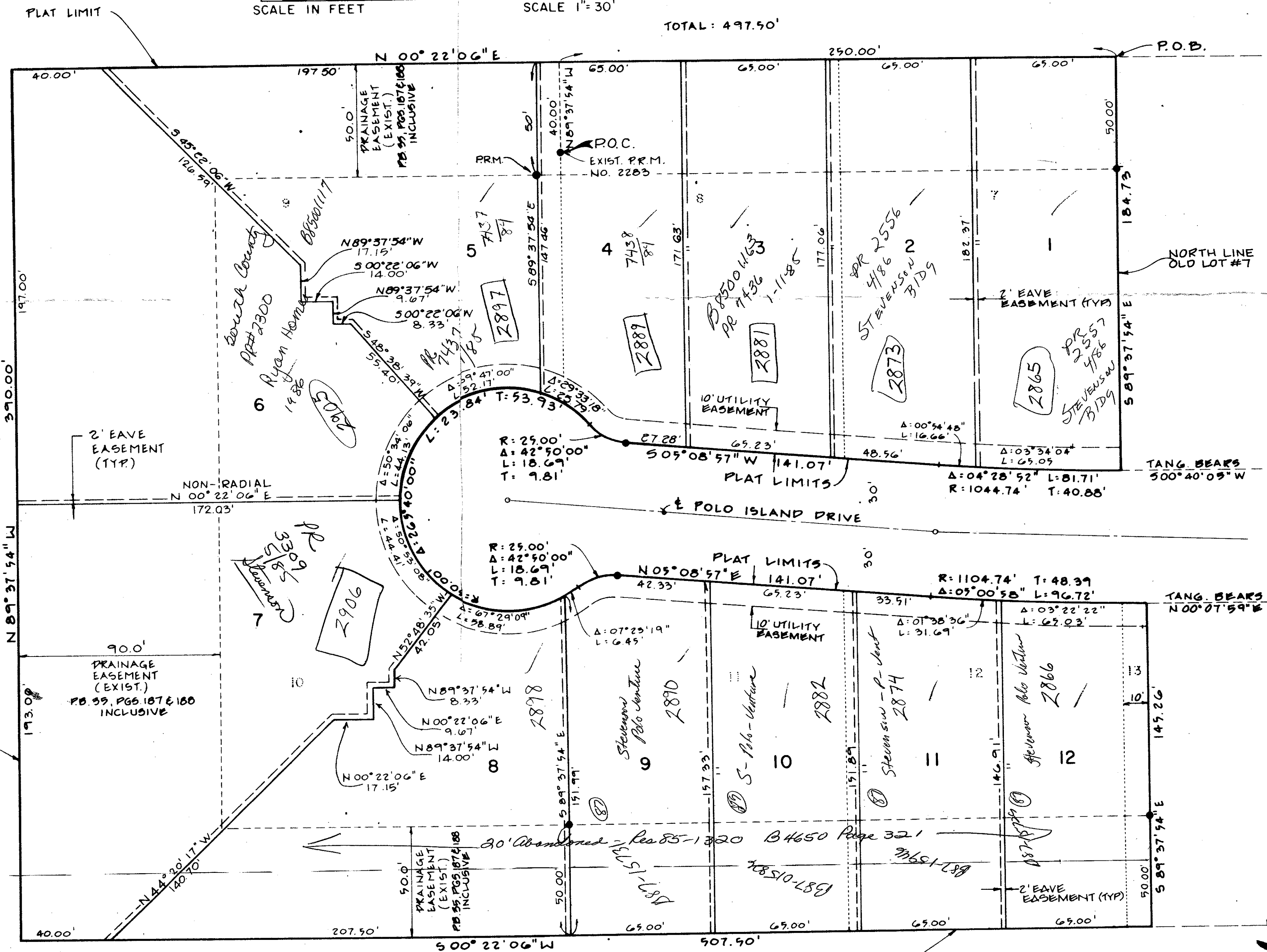
### IN PART OF SECTION 16, TOWNSHIP 44 SOUTH, 41 EAST PALM BEACH COUNTY, FLORIDA IN TWO SHEETS SHEET NO. 2

GEE & JENSON  
ENGINEERS - ARCHITECTS - PLANNERS, INC.  
WEST PALM BEACH, FLORIDA  
SEPTEMBER 1984



UNPLATTED

TOTAL: 497.50'



### MORTGAGEE CONSENT

STATE OF FLORIDA  
COUNTY OF PALM BEACH  
THE UNDERSIGNED hereby certify that they, as such Officers of PALM BEACH ASSOCIATES, INC., a Florida Corporation, are holders of a mortgage upon the hereon described property and do hereby join in and consent to the dedication of the lands described in the dedication hereto, by the owner thereof and agree that their mortgage which is recorded in Official Record Book 4352, Pages 1278-1288, Public Records of Palm Beach County, Florida shall be subordinate to the dedication shown hereon.  
IN WITNESS WHEREOF, the said corporation has caused these presents to be signed by its President and attested to by its Assistant Secretary and its corporate seal to be affixed heron by and with the authority of its Board of Directors, this 1st day of February, 1985.

PALM BEACH ASSOCIATES, INC., a Florida Corporation  
By: Guy R. DeCarlo  
Guy R. DeCarlo, President  
Attest: Diana L. Curren  
Diana L. Curren, Assistant Secretary

### ACKNOWLEDGEMENT

STATE OF FLORIDA  
COUNTY OF PALM BEACH  
BEFORE ME personally appeared Guy R. DeCarlo and Diana L. Curren, to me well known and known to me to be the individuals described in and who executed the foregoing instrument as President and Assistant Secretary, of PALM BEACH ASSOCIATES, INC., a Florida Corporation, and severally acknowledged to and before me that they executed such instrument as such officers of said Corporation, and that the seal affixed to the foregoing instrument is the Corporate Seal of said Corporation and that it was affixed to said instrument by due and regular corporate authority, and that said instrument is the free act and deed of said Corporation.  
WITNESS my hand and official seal this 1st day of February, 1985.

My Commission expires: 06-27-86  
Victoria Ober  
Notary Public-State of Florida

STATE OF FLORIDA  
COUNTY OF PALM BEACH  
This plat was filed for record at \_\_\_\_\_ M. this \_\_\_\_\_ day of \_\_\_\_\_ 1985, and duly recorded in Plat Book No. \_\_\_\_\_ on Page \_\_\_\_\_.  
JOHN B. DUNKLE  
Clerk Circuit Court  
By: \_\_\_\_\_ D.C.

EQUESTRIAN / POLO VILLAGE & COMPLEX OF  
PALM BEACH POLO & COUNTRY CLUB - P.U.D.  
PB. 35 PGS. 187 & 188

16/44/41  
Polo Island  
156  
1000  
AR  
23411  
YES  
POLO ISLAND OF PALM BEACH  
POLO AND COUNTRY CLUB  
WELLINGTON P.U.D.

59/156 0332-320  
Polo Island of P.B. Polo & C.C. Well.

DRAWING NUMBER  
59/156

DRAWING NUMBER

DRAWING NUMBER

DRAWING NUMBER